

Hour meters / timers, electronic

LCD time modules	Max. time range 9999.99 h (DC)	194
-------------------------	---------------------------------------	------------



The timer module of the type 194 for PCB mount features a 6-digit LCD display and 2 voltage ranges (4.75 ... 15 V DC and 9 ... 60 V DC).

It is extremely robust and suitable for many different applications thanks to its wide temperature range.



Timer	Supply voltage 4.75 ... 60 V	Input type PNP	High shock resistance	Temperature range -40°...+80°C	PCB mount	LCD display 6 LCDs	Electrical reset

Powerful

- Display range up to 9999-99 hours.
- 6-digit LCD display, 6 mm high.
- Low power consumption.
- Wide voltage and temperature range.
- Very high shock and vibration resistance.

Simple

- Non-volatile memory (no battery).
- Counting starts as soon as supply voltage is applied.
- Electrical reset.
- Very high reliability.
- Small size and low cost.

Order specifications

Supply voltage	Order no.	Art.-No.	Delivery specification
4.75 ... 15 V DC	6.194.012.F00	162 137	· LCD hour meter module type 194
9 ... 60 V DC	6.194.012.G00	162 138	· Operating instructions

Hour meters / timers, electronic

LCD time modules	Max. time range 9999.99 h (DC)	194
-------------------------	---------------------------------------	------------

Technical data

General technical data

Display	6 digits, LCD display, figure height 6 mm [0.24"]
Display range	9999-99 h
Data backup	CMOS EEPROM non-volatile memory up to 10 years
Operating temperature	-40 °C ... +85 °C [-40 °F ... +185 °F] (non-condensing)
Working temperature	-20 °C ... +80 °C [-4 °F ... +176 °F] (non-condensing)
Storage temperature	-50 °C ... +90 °C [-58 °F ... +194 °F]

Electrical characteristics

Supply voltage	...F00	4.75 ... 15 V DC, with reverse polarity protection
	...G00	9 ... 60 V DC
Current consumption	...F00	8 mA at 4.75 ... 15 V DC
	...G00	6 mA at 9 ... 60 V DC

The module must be protected against inductive voltage spikes and high energy noise interference.

Mechanical characteristics

Housing	color	black
Weight		approx. 8 g [0.28 oz]
Shock resistance	acc. to DIN-IEC 68-2-27	550 m/s ² , 11 ms
Vibration resistance	acc. to DIN-IEC 68-2-6	50 ... 200 m/s ² , 10 ... 80 Hz

Inputs

Reset input	HIGH	4 ... 60 V DC
	LOW	0 ... 0.7 V DC
	pulse length	min. 1 ms, edge triggered (rising)

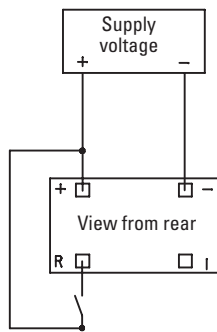
Measuring error
a max. error of 36 sec. occur per Start/Stop cycle

Accuracy (Quarz)
max. 200 ppm
25 °C [+77 °F]

Approvals

CE compliant in accordance with	EMC Directive	2014/30/EU
	RoHS Directive	2011/65/EU

Terminal assignment



Dimensions

Dimensions in mm [inch]

