

LED Process Controllers – Codix 553



Available with serial interface

Your benefit

- Programmable input characteristic curve with up to 24 control points
- MIN/MAX value acquisition and data backup in case of Power Off
- Display-Hold or reset input for the limit values
- Very big keys for use with gloves
- Input for key-lock
- Very bright display

- Input range
0 ... 20 mA, 4 ... 20 mA; 0 ... 10 V
2 ... 10 V; ± 10 V
- Outputs
2 limit values with programmable hysteresis and programmable signal behaviour, relays with change-over contact or optocoupler

More advantages

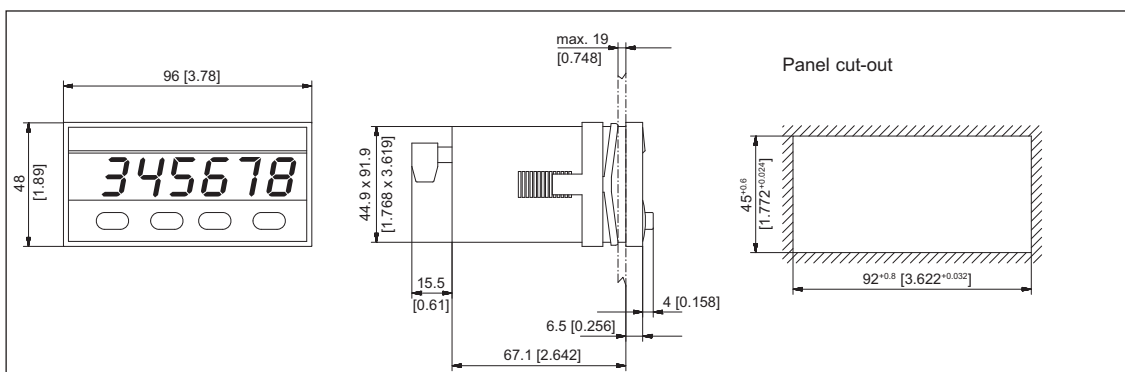
- Auxiliary power supply output for measuring transducer/sensor
- Optional serial interface

Technical data

Miscellaneous Data		Zero calibration	automatic
Display	5-digit display, red 7-segment LED's; height 14.2 mm [0.559"]	Temperature drift	100 ppm/K
Display range	-19999 ... 99999, with leading zeros suppression	Weight	approx. 220 g [7.76 oz]
Out of Range Indication	under-range uuuuu / Over-range ooooo	Protection	IP 65 (front)
Data storage	EEPROM, 1 Million storage cycles or 10 Years	Ambient temperature	-20 ... +65 °C [-4 °F ... 149 °F]
EMC:	Immunity to interference: EN55011 class B Emitted interference EN61000-6-2	Storage temperature	-40 ... +85 °C [-40 °F ... 185 °F]
Device safety:	design to: EN61010 Part 1 protection: Class: 2 application area: Soiling Level 2	Digital inputs	
AC power supply	90 ... 260 V AC/max. 6 VA external fuse 100 mA/T	Input MPI*	Function of the input is dependent on set up to stop the instantaneous value
DC power supply	10 ... 30 V DC, max. 2 W, galvanically isolated with inverse polarity protection external fuse 250 mA/T	1. Function Display-Hold	to stop the instantaneous value
Mains Hum Filter	digital filter 50 Hz or 60 Hz, programmable	2. Function Reset	Reset the alarm value
Measurement ranges		Alarm Latch	
Current input (DC)	ranges 0 ... 20 mA, 4 ... 20 mA resolution 2 μ A voltage drop max. 2 V at 20 mA max. current 50 mA	Input KEY	Keypad lock-out of alarm setting
Voltage input(DC)	ranges 0 ... 10 V, 2 ... 10 V, ± 10 V resolution 1 mV input resistance > 2 MW max. voltage ± 30 V	Outputs	
Measuring speed	approx. 2 measurements/s	Alarm 1/Alarm output 2	
Linearity	< 0.1% ± 1 Digit for the whole measuring range at an ambient temperature of 20°C [68 °F]	Relay	output with volt-free changeover contacts can be setup as normally closed or normally open
		Switching voltage	250 V AC/300 V DC
		Switching current	max. 3 A AC/DC, min. 30 mA DC
		Switching power	2000 VA / 50 W
		Auxiliary power supply output for measuring transducer/sensor	
		AC models	voltage output 10 V DC $\pm 2\%$, 30 mA and voltage output 24 V DC $\pm 15\%$, 50 mA
		DC models	only voltage output 10 V DC $\pm 2\%$, 30 mA
		Interface	
		Available options	RS232, RS485, RS422
		Baud rate	600, 1200, 2400, 4800, 9600, 19200 programmable
		Address	00 ... 99 programmable

*MPI: Multi Purpose Input

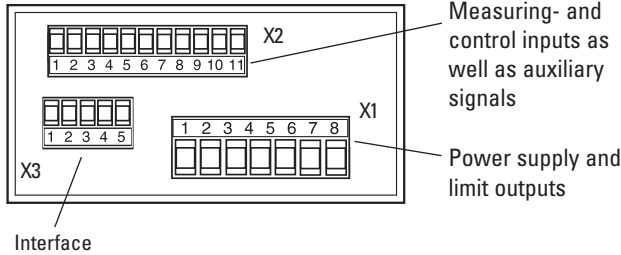
Dimensions:



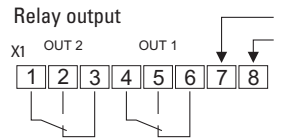
LED Process Controllers – Codix 553

Connections:

Rear side view

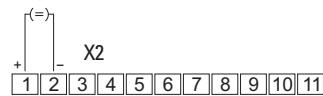


Power supply and alarm outputs



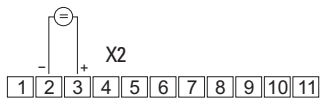
	DC version	AC version
7	10 ... 30 V DC	90 ... 260 V AC (N-)
8	GND4 (0 V DC)	90 ... 260 V AC (L-)

Current measurement



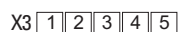
1	Current input (I) 0 ... 20 mA / 4 ... 20 mA
2	GND1 (Analog)

Voltage measurement



2	GND1 (Analogue)
3	Voltage input (U) 0 ... 10 V, 2 ... 10 V, -10 ... +10 V

Interface



	RS232	RS485	RS422
1	GND	-	-
2	RxD	DO+/RI+	RI+
3	TxD	DO-/RI-	RI-
4	-	-	DO+
5	-	-	DO-

Delivery includes:

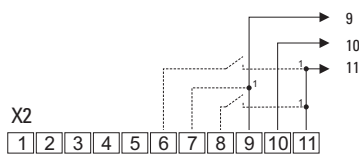
- Process display
- Screw terminal, 8-pole, RM 5.08
- Screw terminal, 11-pole, RM 3.81
- Screw terminal, 5-pole, RM 3.81(*)
- Clamping bracket
- Gasket
- Multilingual operating instructions
- 1 set of self-adhesive symbols

* only with the interface option

Replacement parts:

11-pin screw terminal	RM 3.81 1 ... 11:	N100356
2-pin screw terminal	RM 5.08 1 ... 2:	N100130
5-pin screw terminal	RM 3.81 1 ... 5:	N100399

Control inputs and auxiliary power supply (U_{out})



- Alternatively connect directly to DC supply (galvanic separation of control and measurement inputs)

9	GND3 (for U _{out})
10	U _{out} +10 V/30 mA
11	U _{out} +24 V/50 mA only for power supply 90 ... 260 V AC
8	MP-Input "Reset-Alarm-Latch/ Display-Hold"
7	GND2 (KEY/MPI)
6	Keypad lock-out "Key"

Application:

- Level measurement
- Flow measurement
- Pressure measurement
- Revolution measurement
- Speed control in conjunction with the 0... 10 V outputs from inverters
- Programming and readout of values via PC

Serial interface

- For data transmission and documentation
- Connection for programmable logic controllers
- Programming via PC

Order code:

6.553.01X.X0X

