

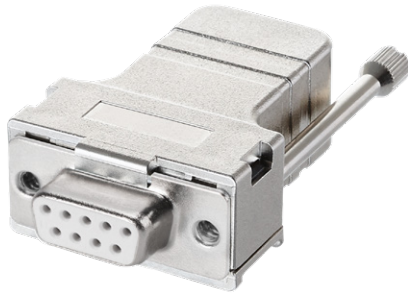
# Cables and connectors

**Connectors**

**Sub-D connection technology**

**9 pin**

**Female connector with cable outlet 70°**



Push-Pull  
HTL

RS422  
TTL

SinCos

**Order details**

Order no.

**8.0000.514B.0000**

**Technical data**

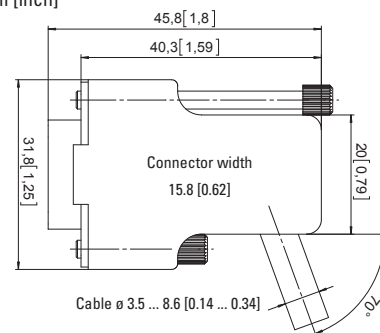
**Connector housing**

material: ABS, metalized  
protection: IP20

**Cable connection**

connection technology: solder connections  
for cable cross sections:  $\varnothing$  3.5 ... 8.6 mm

Dimensions in mm [inch]



**Connections**

Shield on housing

Plug-in face

