

Connectors

MIL connection technology

7 pin



Female connector with coupling nut



Push-Pull HTL RS422 TTL Open Collector NPN

Order details

Order no.

8.0000.5052.0000

Technical data

Connector housing

material metal
protection IP67

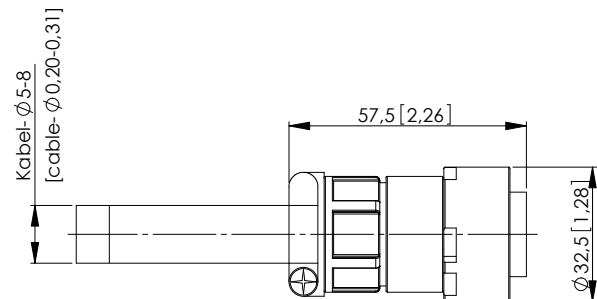
Cable connection

connection technology solder connections
for cable cross sections $\varnothing 5 \dots 8 \text{ mm}$ [0.20 ... 0.31"]

Working temperature range

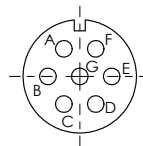
-55 °C ... +125 °C [-67 °F ... +248 °F]

Dimensions in mm [inch]



Connections

Plug-in face



Suitable for our series

Encoders
incremental

5000 / 5020
KIS50 / KIH50
A02H