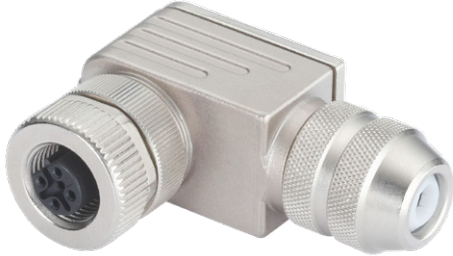


## Connectors

M12 connection technology

5 pin

Female connector with coupling nut, B coded, right-angle



## Order details

Order no.

05.BMWS 8251-8.5

## Technical data

### Connector housing

material metal  
protection IP67

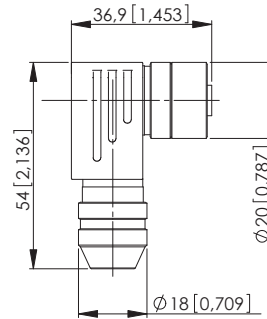
### Cable connection

connection technology screw  
for cable cross sections  $\varnothing 4 \dots 9 \text{ mm}$

### Working temperature range

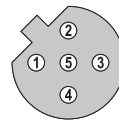
$-30 \text{ }^\circ\text{C} \dots +80 \text{ }^\circ\text{C}$  [ $-22 \text{ }^\circ\text{F} \dots +176 \text{ }^\circ\text{F}$ ]

Dimensions in mm [inch]



## Connections

Plug-in face, B coded



## Suitable for our series

Encoders singleturn	Encoders multiturn	Draw-wire encoders	Linear measuring systems	Slip rings
5858 / 5878	5868 / 5888	B75 B80 C105 C120 D135	Limes KIT TB1	SR160