

# Cables and connectors

## Preassembled cables

## M12 connection technology

## With connector, 5 pin



**Female connector with coupling nut, A coded, right-angle**

**PVC cable, 3 x 2 x 0.25 mm<sup>2</sup> [AWG23]**  
seawater resistant, recyclable, PWIS free,  
acid/alkali/oil/ozon/UV resistant

**Male connector with external thread, A coded, right-angle**



SAE J1939

### Order details

Order no.

for Bus in / out

Cable length

1 m [3.28']

**05.00.6091.A5A3.001M**

2 m [6.56']

**05.00.6091.A5A3.002M**

...

xx m

**05.00.6091.A5A3.0xxM**

xx = length in meters:

1, 2, 3, 5, 8, 10, 12, 15, 20, 25, 30

standard cable length  
(further on request)

### Technical data

#### Connector

material housing: metal / plastic  
protection: IP67

#### Wire cross sections

3 x 2 x 0.25 mm<sup>2</sup> [AWG23] + shield

#### Working temperature range

-30 °C ... +90 °C [-22 °F ... +194 °F]

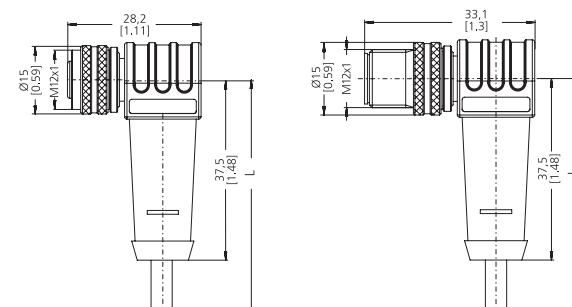
#### Bending radius cable min.

flexible installation: 70 mm [2.76"]  
fixed installation: 45 mm [1.77"]

#### Cable sheath

cable diameter approx.: 4.7 mm ±0.2 mm  
material sheath: PVC

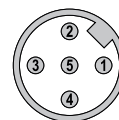
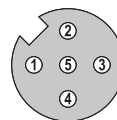
Dimensions in mm [inch]



### Connections

Shield on housing

Plug-in face, A coded



### Suitable for our series

Encoders incremental	Encoders singleturn	Encoders multiturn	Draw-wire encoders	Linear measuring systems	Inclinometers	Slip rings
5000 / 5020	3651 / 3671	M3661(R) / M3681	A41	Limes KIT TB1	IN88	SR160
KIS50 / KIH50	M3651A(R) / M3671A	M3668(R) / M3688	A50			
A02H	M3658A(R) / M3678A	F3668 / F3688	B75			
	F3653 / F3673	M5861	B80			
	F3658 / F3678	M5868	C60			
	M5851A	5868 / 5888	C100			
	M5878A	F5868 / F5888	C105			
	5858 / 5878	F5888M Motor-Line	C120			
	S3674	S3684	D120			
			D125			
			D135			