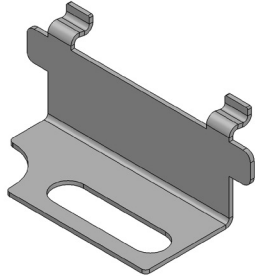


Linear measuring technology

Shaft copying system
Spare parts

Locking element



The locking element is used for fastening the slides in the Ants LEB02 and Ants LES02 sensors.

The locking element is to be replaced in case of deformations or damages.

Order code

8.LEX.ZB.0013

Scope of delivery: 1 x locking element
1 x oval head screw M3.5 x 12

Technical data

Material 1.4310, stainless, austenitic steel

Dimensions

Dimensions in mm [inch]

