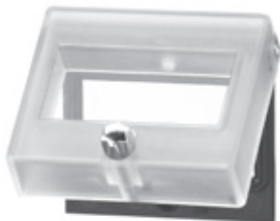


## Transparent cover Details

### Dimensions / Details

#### Transparent cover type 1 Dv (mounted on bezel) lockable, IP65

for counters with cut-out 54 x 25 mm [1.97 x 0.98"] or  
45 x 22.2 mm [1.77 x 0.94"]



- 1 Front bezel
- 2 Countersinking Bf4, DIN 74

#### description:

- for cut-out 54 x 29 mm [2.13 x 1.14"]
- screw mounting on front bezel F1B  
or adapter front bezel N003001
- IP65 protection with front bezel

#### suitable for:

B 1x.3x, HB 2x.3x

transparent /  
black

with front bezel F1B:

B 1x.0x, HB 2x.0x

via adapter front bezel  
N003001:

Codix 13x, 14x, 52x, 53x,  
W 15.5, W 16.5, W 17.5,  
H 37, H 37.5

#### Order-No.

**N003002**

