

LCD Module – 190

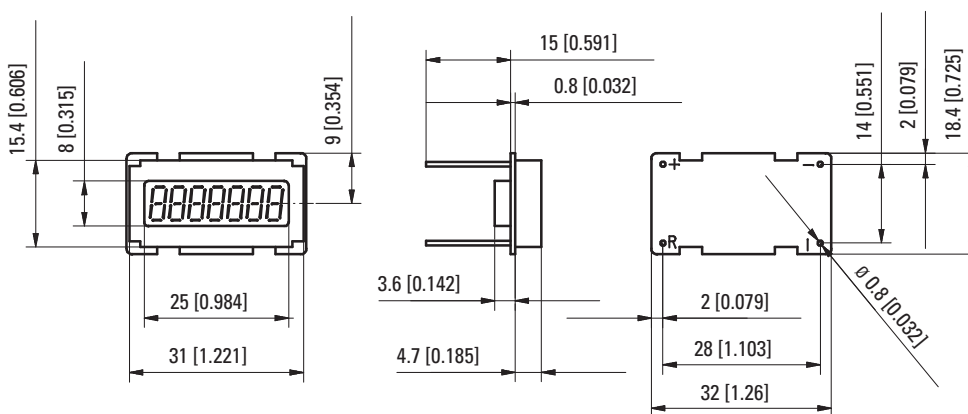


- Counting frequency up to 10 kHz
- 7-digit display, height 6 mm [0.236"]
- Non-volatile memory (no battery, EEPROM)
- High reliability
- Low operating current
- Wide operating voltage and temperature range
- Very high shock and vibration resistance

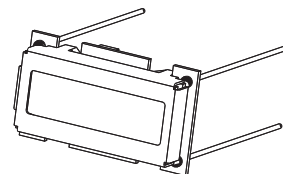
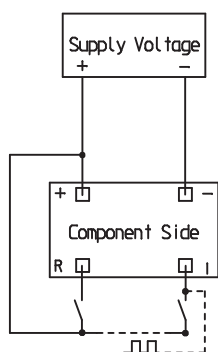
Technical data:

Supply:	1. 4.75 ... 15 V DC 2. 9 ... 60 V DC reverse polarity protection	EMC:	Emitted interference EN55011 Class B Immunity to interference: EN61000-6-2
Current consumption:	1. 8 mA at 4.75 ... 15 V DC 2. 6 mA at 9 ... 60 V DC	Weight:	approx. 8 g [0.282 oz]
Count and reset input:	high 4 ... 60 V DC, low: 0 ... 0,7 V DC	Memory capacity:	CMOS EEPROM. non-volatile memory has data retention in excess of 10 years.
Max. count frequency:	10 kHz (edge triggered)	Shock resistance acc. to DIN-IEC 68-2-27:	550 m/s ² , 11 ms
Display:	7-digit display, figure height 6 mm [0.236"]	Vibration resistance acc. to DIN-IEC 68-2-6:	50 ... 200 m/s ² , 10 ... 80 Hz
Data backup:	EEPROM	Needs protection from:	inductive stress peaks, high energy noise, fields switching, alternator load dump
Colour:	black		
Working temperature:	-20 ... +80 °C [-4 ... 185 °F] non-condensing		
Operating temperature:	-40 ... +80 °C [-40 ... 176 °F]		
Storage temperature:	-50 ... +90 °C [-58 ... 194 °F]		

Dimensions:



Connecting diagram:



Order code:

LCD count module type 190:
 4.75 ... 15 V DC Order-No.: 6.190.012.F00
 Art-No.: 162 135
 9 ... 60 V DC Order-No.: 6.190.012.G00
 Art-No.: 162 136

Delivery specifications:

- LCD Counter Module Type 190
- Operating instructions