

## LCD Modules – 167/168



- 6-digit LCD display counter for panel or PCB mount (removable mounting)
- 3 V DC power supply
- Current consumption <math>< 5 \mu\text{A}</math> (- Inputs TTL/CMOS compatible
- Electrical zero reset

### Type 167:

count mode: adding

### Type 168:

count mode: adding/subtracting

1 count input

1 direction input

### Applications:

Event counting, position-, length- and distance measurement, PCB counter

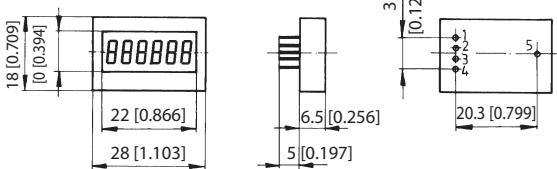
### Technical data:

Power supply:	2.6 ... 3.4 VDC
Current consumption:	typical 5 $\mu\text{A}$ , 10 $\mu\text{A}$ at 10 kHz
Display:	LCD, 6-digit, 6 mm [0.236"] high
Count range:	999999
Overflow	
Type 167:	from 999 999 to zero
Type 168:	adding from 999 999 to zero subtracting from zero to 999 999
Count input:	max. count frequency 10 kHz min. pulse time 50 $\mu\text{s}$ negative triggered (NPN)
0 reset:	min. pulse time 15 ms negative triggered (NPN)

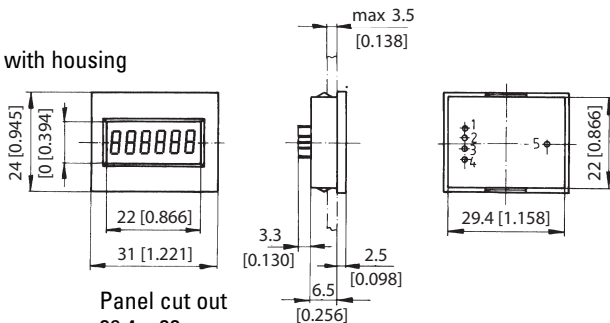
Direction input (Only Type 168):	switch to 0 V or negative triggered (NPN) open input: count mode adding Input to zero: 0 V: count mode subtract.
Interference resistance:	EN 50081-1
Emitted interference:	EN 55022 class B
Working temperature:	-10 ... +60 °C [14 ... 140 °F]
Storage temperature:	-10 ... +60 °C [14 ... 140 °F]
Housing:	clear polycarbonate and black ABS housing
Protection:	IP 40
Weight:	7.5 g [0.265 oz]
Electrical connection:	PCB pin $\varnothing$ 0.4 mm [0.016"]

### Dimensions:

without housing

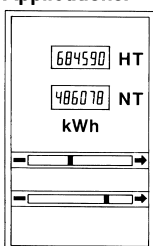


with housing



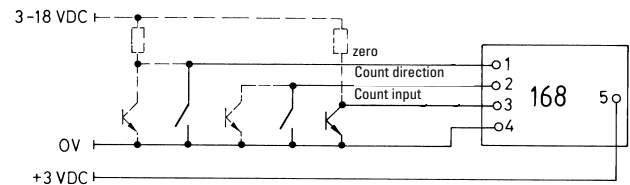
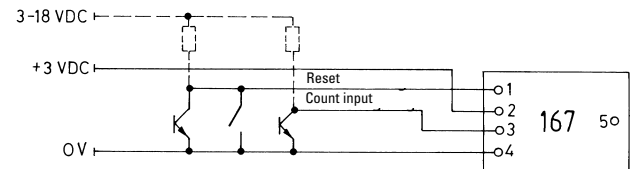
Panel cut out  
29.4 x 22 mm  
[1.158 x 0.866"]

### Applications:



kWh meter

### Connections:



Pin-No.	Function	
	Type 167	Type 168
1	Reset	Reset
2	+ 3 VDC	Count direction
3	Count input	Count input
4	0 V	0 V
5	0 V	+3 VDC

### Order code:

Type 167: 0.167.012.000\*

Type 168: 0.168.012.000\*

### Delivery specification:

LCD module

Operating manual

\*standard stock model