

Accessories

Encoder mounting attachments Fixing components for shaft encoders Details

Dimensions / Details

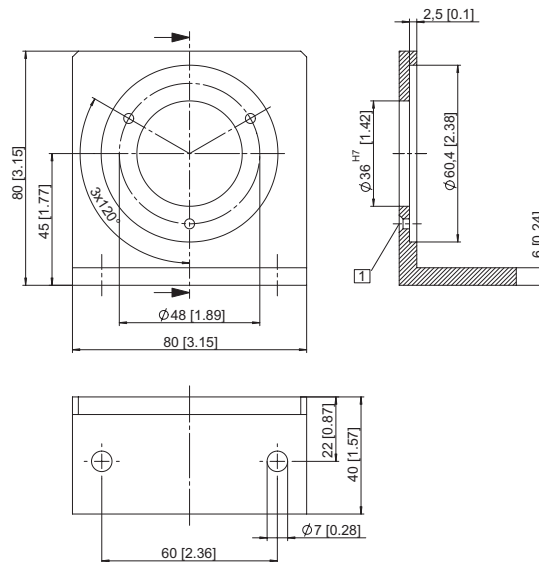
Angular flange

Scope of delivery:

- angular flange (aluminium)
- 3 screws for encoder mounting

Connection to application:

- 2 screws (not supplied)



1 countersunk DIN 74-Hm6

Order-No.

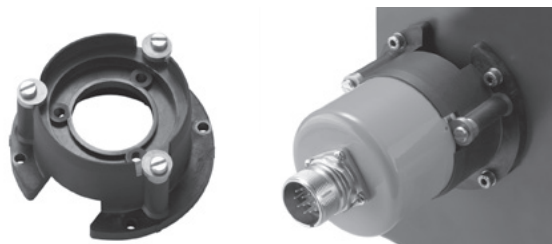
8.0010.2300.0000

Assembly bell

- Easy and quick encoder mounting
- Electrical and thermal isolation by means of glass fibre reinforced plastic and isolating spring washer coupling
- Supplied as complete set

Scope of delivery:

- Assembly bell
- Spring washer type coupling (8.0000.1401.XXXX)
- 4 hexagon socket head cap screws DIN 912 M4 x 12
- 3 hexagon socket head cap screws DIN 912 M4 x 10
- 7 washers DIN 433 ϕ 4
- 3 fastening eccentrics (8.0000.4B00.0000)
- 3 hexagon head screws DIN 84 M 4 x 35
- 3 hexagon nuts DIN 934 - M4



Order-No.

8.0000.4500.XXYY

XX = Coupling diameter
d1 in mm
YY = Coupling diameter
d2 in mm

