

Connection Technology

M12 and RJ45 Connection Technology EtherCAT / PROFINET

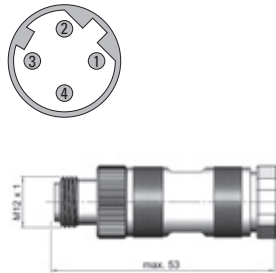
Connectors, self-assembly, 4-pin

**Male connector with external thread
Port A (1) and B (2)
straight, IP67**

Housing: metal



D coded, screw connections,
for cable \varnothing 4 ... 9 mm



suitable for our series:

5858 / 5878
5868 / 5888

Order No.

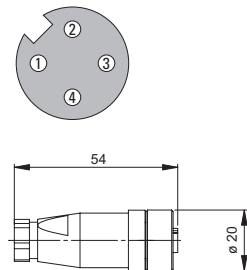
05.WASCSY4S

**Female connector with coupling nut
power supply,
straight, IP67**

Housing: plastic



A coded, screw connections,
for cable \varnothing 4 ... 6 mm



suitable for our series:

5858 / 5878
5868 / 5888

Order No.

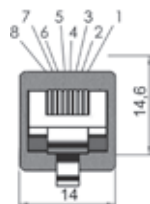
05.B8141-0

**RJ45 connector
straight, IP20**

Housing: plastic



screw connections,
for cable \varnothing 4,5 ... 8 mm



suitable for:
EtherCAT bus cable

Order No.

05.VS-08-RJ45-5-Q/IP20

Connection Technology

M12 and RJ45 Connection Technology EtherCAT / PROFINET

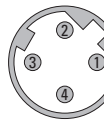
Cordsets with connector, pre-assembled, 4-pin (Working temperature range -30°C ... +80°C)

Male connector with external thread
Port A (1) and B (2)
straight, IP67, single-ended

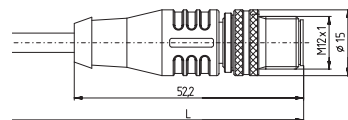
Cable: PUR, 2 x 2 x 0,34 mm²
 Housing: metal /plastic



D coded



- 1: YE
- 2: OG
- 3: WH
- 4: BU Shield on housing



suitable for our series: *Cable length*

5858 / 5878
 5868 / 5888

2 m
 5 m
 10 m

Order No.

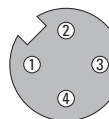
05.00.6031.4411.002M
05.00.6031.4411.005M
05.00.6031.4411.010M

Female connector with coupling nut
power supply
straight, IP67, single-ended

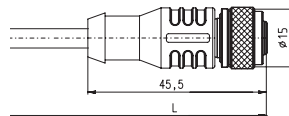
Cable: PUR, 4 x 0,34 mm²
 Housing: metal /plastic



A coded



- 1: BN
- 2: WH
- 3: BU
- 4: BK Shield on housing



suitable for our series: *Cable length*

5858 / 5878
 5868 / 5888

2 m
 5 m
 10 m

Order No.

05.00.6061.6211.002M
05.00.6061.6211.005M
05.00.6061.6211.010M