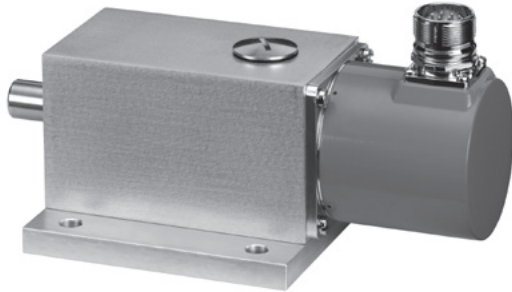


Accessories

Bearing box



In applications where the encoder is driven by use of gears, chains, belts etc. and the permitted axial and radial shaft loads are exceeded, we recommend the use of the special designed bearing box which has stronger bearings.

This can be combined with all encoders with a 58 mm clamping flange and shaft dia. 10 x 20 mm.

Order-No. 8.0010.8200.0004

Scope of delivery

- Bearing box with lock cover and sealing
- Coupling for shaft \varnothing 10 mm
- Flange adapter 8.0010.2100.0000
- 3 x countersunk head screws DIN 63 M 3 x 8
- 4 x slotted cheese head screws DIN 84 M 4 x 8

Technical data		
Shaft load	axial	150 N
	radial	250 N
Lifetime of bearings		50.000 h
Protection EN 60 529		IP65
max. speed		4000 min ⁻¹

Dimensions

